

PRONTO™.035"

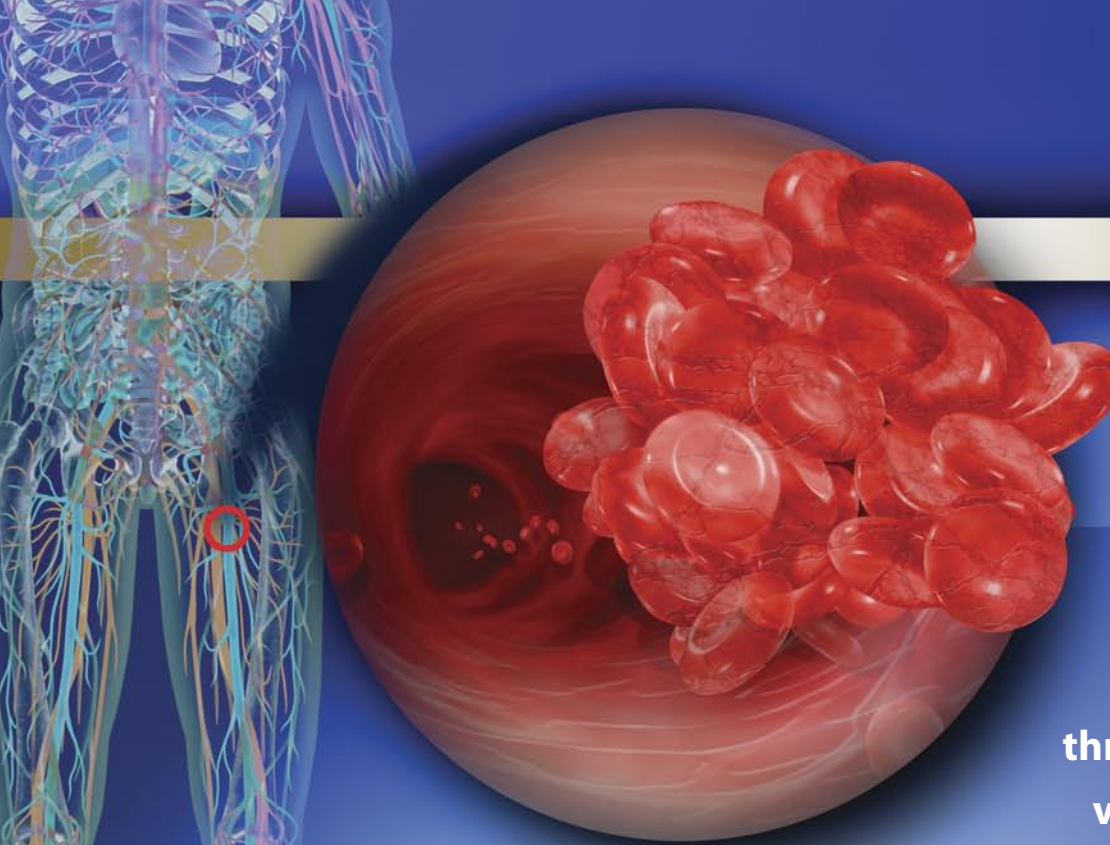
Extraction Catheter

The power and simplicity of thrombus aspiration for large vessels



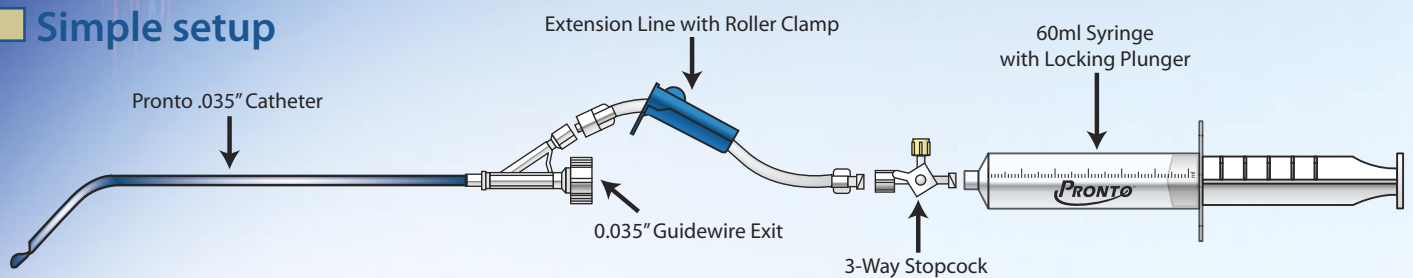

Vascular
SOLUTIONS

Bringing thro



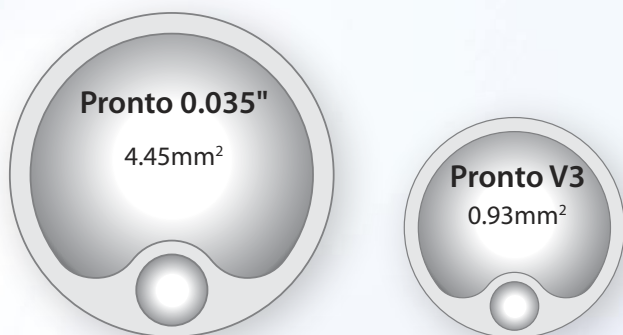
A complete system for the rapid removal of thrombus from arteries or veins greater than 4mm.

Simple setup



Maximized thrombus aspiration with rate control

- Unobstructed aspiration lumen with an in-line roller clamp to control the rate of aspiration



450% greater effective lumen than Pronto V3



Increases Aspiration

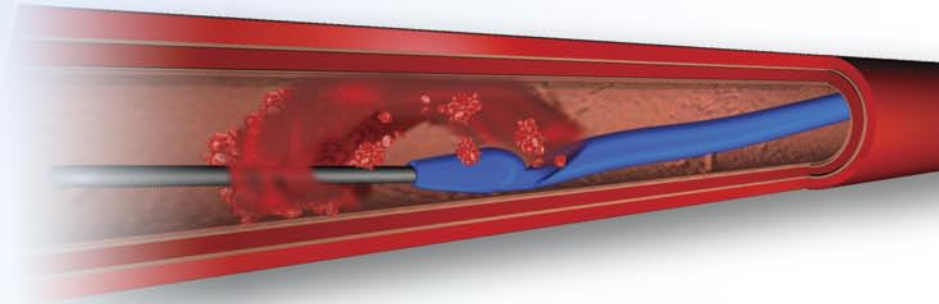
Roll clamp towards catheter to increase aspiration

mbus aspiration to large vessels...

PRONTO!

■ **Tapered Silva Tip**

- Smooth introduction and passage through the vessel
- Designed to prevent vessel wall interference with thrombus aspiration



■ **Braid Reinforced Extrusion**

- Resists kinking over entire length of catheter
- Increases tip control

■ **Easy Over-The-Wire Delivery**

- Compatible with standard 0.035" guidewires
- 10F sheath compatible

■ **120° Angle with 4cm Tip**

- Enhances steerability and vessel selection
- Rotational control of aspiration lumen in large vessels



PRONTO™ .035"

Extraction Catheter

Model	Description	Box Quantity
5040	Pronto .035" Extraction Catheter	1

Pronto .035" Specifications

Sheath compatibility:	≥10F (3.35mm I.D.)
Guidewire compatibility:	0.035"/0.89mm
Overall length:	127cm
Working length:	115cm
Marker band:	Located ≈4mm from the distal tip
Syringe:	Locking 60ml polycarbonate syringe

The Pronto .035" is indicated for:

- the removal/aspiration of embolic material (thrombus/debris) from vessels of the arterial system
- the removal/aspiration of embolic material (thrombus/debris) from vessels of the deep venous system
- to infuse/deliver diagnostic or therapeutic agents

The Pronto .035" is contraindicated in:

- vessels <4.0mm in diameter
- the removal of fibrous, adherent or calcified material (e.g., chronic clot, atherosclerotic plaque, chronic pulmonary embolism)
- use in the right heart or pulmonary arteries during active cardiopulmonary resuscitation



U.S.A. CAUTION: Federal Law (U.S.A.) restricts this device to sale by or on the order of a physician.

CAUTION: The Pronto .035" Extraction Catheter procedure should be performed by physicians with adequate training in the use of the device.

Please see the Pronto .035" Instructions for Use for a complete listing of the indications, contraindications, warnings and precautions.

U.S. and International patents pending.

Pronto is a trademark of Vascular Solutions, Inc.

©2007 Vascular Solutions, Inc. All rights reserved.

ML1752 Rev. A 06/07



Vascular Solutions, Inc.

6464 Sycamore Court

Minneapolis, Minnesota 55369 USA

USA Customer Service: 888.240.6001

www.vascularsolutions.com